

PRINT ON DEMAND:

All images in this catalogue are available for Print on Demand. Order any image up to 51" on canvas, fine art paper or quality poster paper.

Our extensive online catalogue is the perfect way to look for art. Start by browsing our website collections and narrow your search by artist, keyword, or subject or size.

You can even create your own PDF Portfolios and send them to our sales team as an inquiry.

Visit www.wildapple.com.



www.facebook.com/buyart.wildapple



www.instagram.com/wildappleart/



www.linkedin.com/company/wild-apple-graphics



www.pinterest.com/wildappleart/



twitter.com/wildappletweet

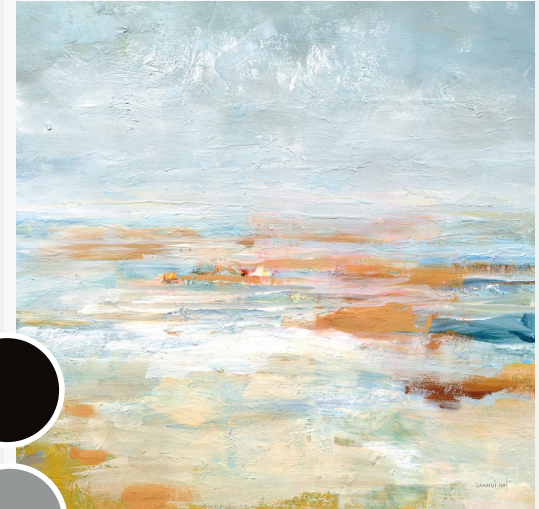
WILD  APPLE





texture

Sometimes you can feel the brushstrokes on a piece of art. Consumers are longing for art and wall decor that feels authentic and painterly. We are experts at capturing an original piece of art and translating it into print form. Look for landscapes, abstracts and florals with bold brushstrokes and layering to add dimension to your collections.



- 80624 ALMOST IN LOVE
- 79632 TONED TEXTURE VII
- 80147 TO THE SEA
- 78364 DISTANT FOREST

city scene

Embrace the urban jungle with art inspired by the big city. From abstracts and cityscapes to music and graffiti inspired works of art, consumers are seeking edgier looks that add a gritty street-inspired vibe. We love this direction and can't wait to see how it evolves.

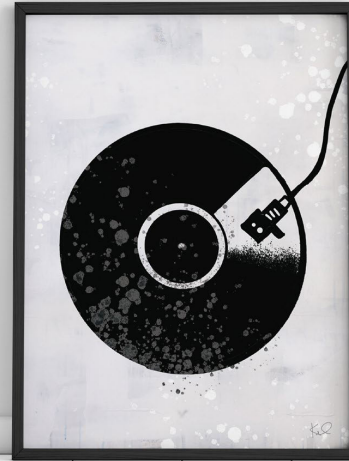


A: 80525 MANHATTAN CLOUDS | B: 80517 CENTRAL PARK EARLY SPRING
SILVIA VASSILEVA





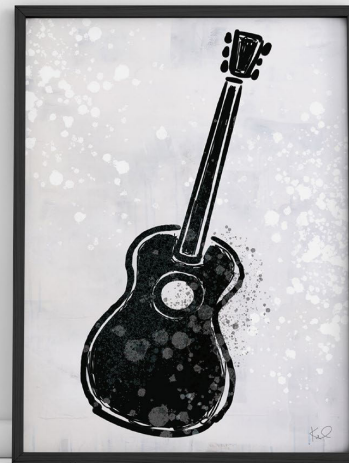
80855 ON THE ROAD SQ
SILVIA VASSILEVA



81110 TURN IT UP XII
KENT YOUNGSTROM



81107 TURN IT UP IX
KENT YOUNGSTROM

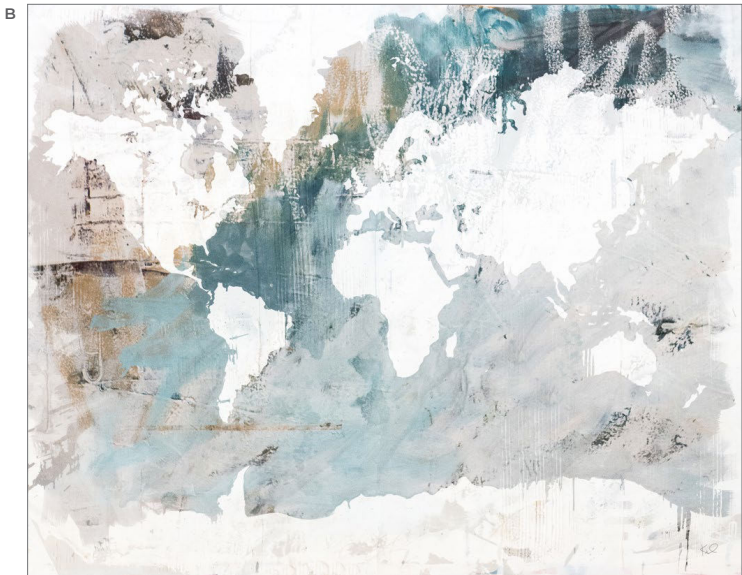


81108 TURN IT UP X
KENT YOUNGSTROM



81109 TURN IT UP XI
KENT YOUNGSTROM

ART DECOR



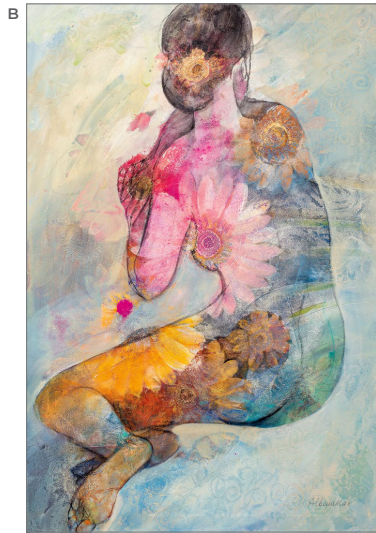
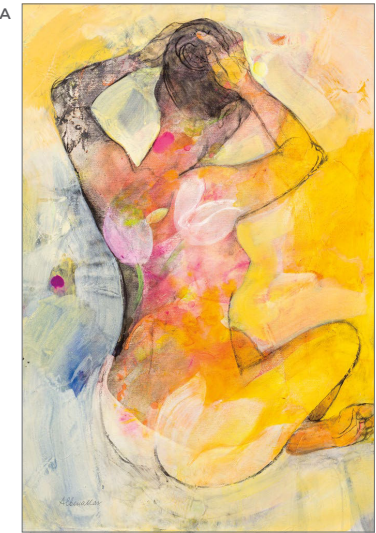
A: 81314 FLORAL GRAFFITI WORLD MAP | B: 81317 NEUTRAL WORLD MAP
C: 81099 TURN IT UP I | D: 81100 TURN IT UP II
KENT YOUNGSTROM

A: 80628 LOVE ON STEROIDS | B: 80624 ALMOST IN LOVE
KENT YOUNGSTROM

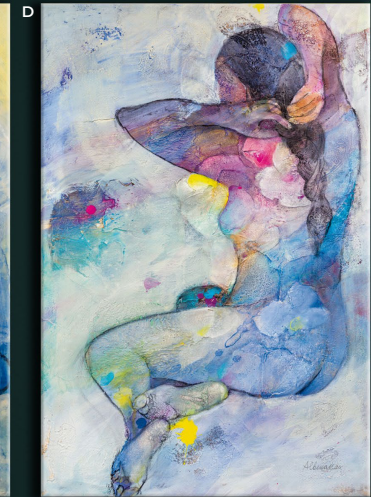
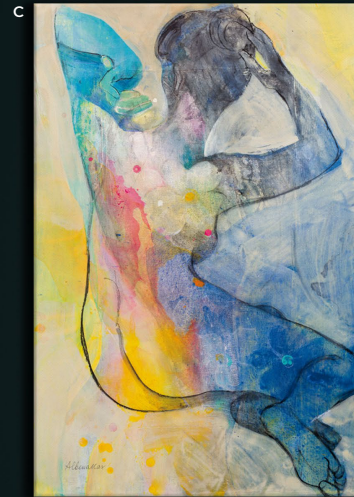


hello brights

Need a little pick me up? Art can do that. It started on the runway and it's making its way to the home. Bright colors in every wonderful shade are capturing the attention of designers and consumers alike, who are longing to add cheer and happiness to their homes. We're loving modern abstract collections with bright pops of electric blue, yellow and pink to add an unexpected pop of color into our lives.



A: 80832 FLORAL FIGURES I | B: 80833 FLORAL FIGURES II
C: 80834 FLORAL FIGURES III | D: 80835 FLORAL FIGURES IV
ALBENA HRISTOVA





A



B

A: 79979 ALL IS NOT LOST
PAMELA MUNGER

B: 80522 ISLAND FIESTA
SILVIA VASSILEVA





Want to brighten up a neutral space - go for color. Bright color stories can change the mood of a space in an instant. By just adding art, the vibe changes from light and airy, to bold and bright, and all it took was art. Isn't that amazing!

A: 80127 JEWEL WATERWAY I
B: 80128 JEWEL WATERWAY II
CHRIS PASCHKE

A



spring fling

It's not even winter yet, but we're dreaming of Spring. Wild Apple artists are known for their ability to capture the beauty of flowers in all their glory. Whether you love bright collections and art that pops or softer, more subtle pieces, there is nothing like florals to brighten a room every day of the year.

A: 80581 INDEPENDENCE | B: 80794 EASTER BOUQUET
JEANETTE VERTENTES

B





A: 80583 WHITE WASH | B: 80579 COTTON CANDY
JEANETTE VERTENTES

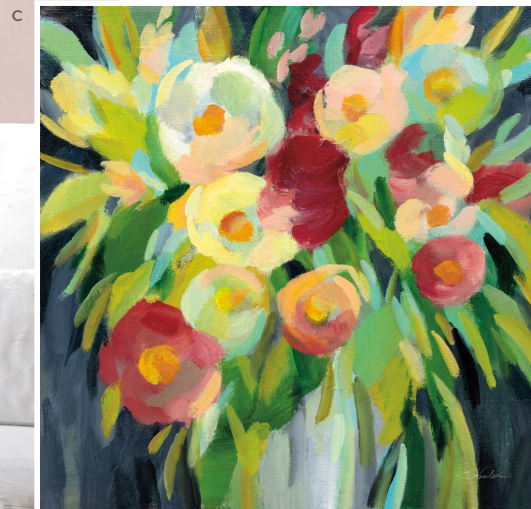
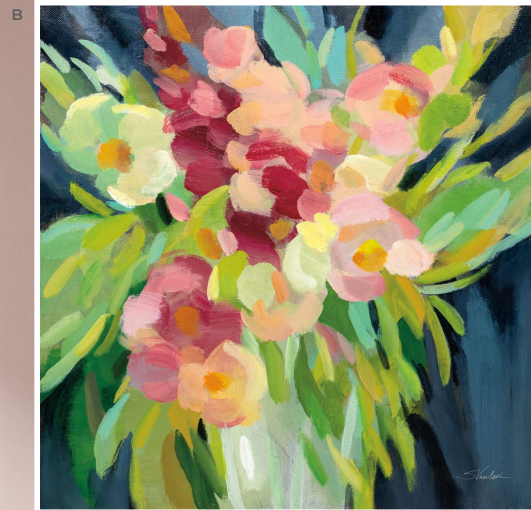




A: 79403 SPRING BIRDS I | B: 79404 SPRING BIRDS II
COURTNEY PRAHL

C: 81009 GREEN BRANCHES I | D: 81010 GREEN BRANCHES II
SILVIA VASSILEVA





A: 81182 SUMMER HOLLYHOCKS
PAMELA MUNGER

B: 80857 SPRING FLOWERS IN A VASE I
C: 80858 SPRING FLOWERS IN A VASE II
SILVIA VASSILEVA



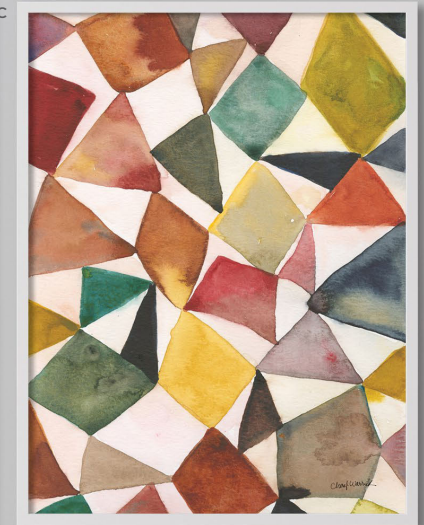
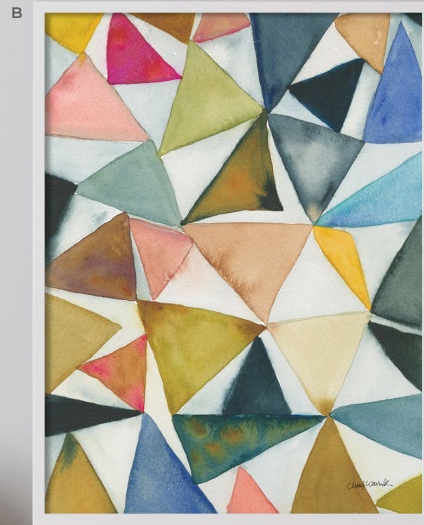
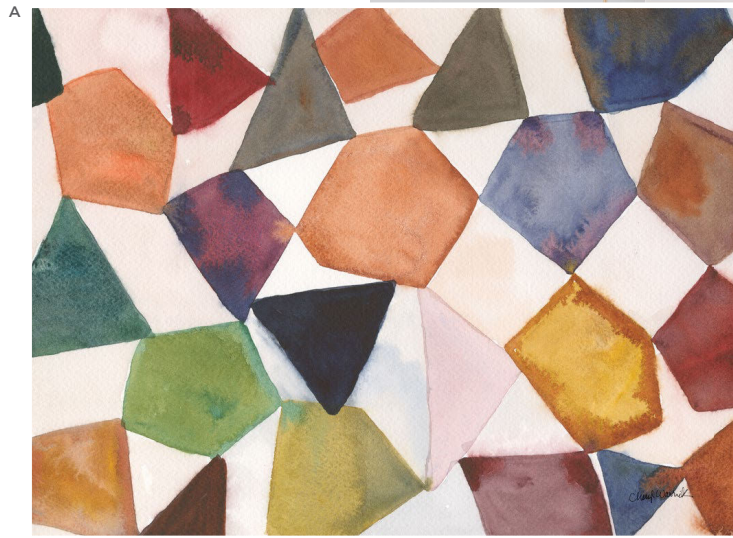


80848 BEFORE THE SUMMER RAIN
SILVIA VASSILEVA



earth tones

Stay grounded with color palettes in warm earthy tones. Soft ochre, moss, dusty blues and warm shades of dusty rose fill spaces with easy, nature-inspired collections that help us feel safe, warm and protected.



A: 79905 TILT SHIFT III
B: 79903 TILT SHIFT I
C: 79904 TILT SHIFT II
CHERYL WARRICK



ART DECOR



A: 80523 LAVA I | B: 80524 LAVA II
SILVIA VASSILEVA

C: 79906 BLISS I | D: 79907 BLISS II
CHERYL WARRICK





A: 81313 EARTHEN MAP OF THE WORLD | B: 81316 MAP OF THE WORLD
KENT YOUNGSTROM

C: 81183 REGENERATION
PAMELA MUNGER

D: 80859 STRING MELODY
SILVIA VASSILEVA

big sky

Here's to wide-open spaces and fresh air. These modern landscapes are all about capturing a feeling, a feeling of peacefulness and quiet reflection that only nature can provide. Stunning photography and painterly collections showcase the beauty of nature that never fades.

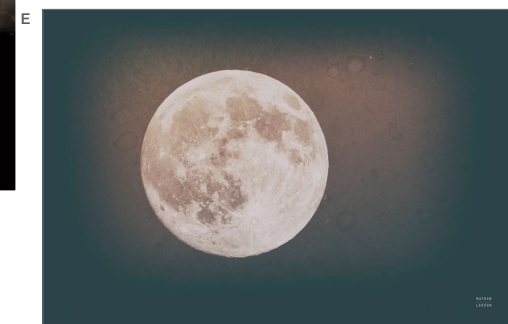
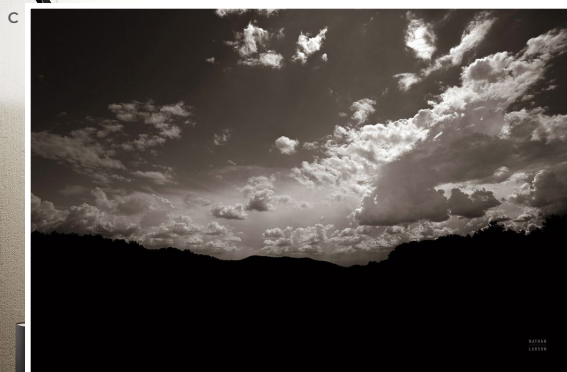


A: 57291 EVENING FOREST I | B: 57292 EVENING FOREST II
MELISSA AVERINOS

C: 81197 MOUNTAIN LAYERS
NATHAN LARSON

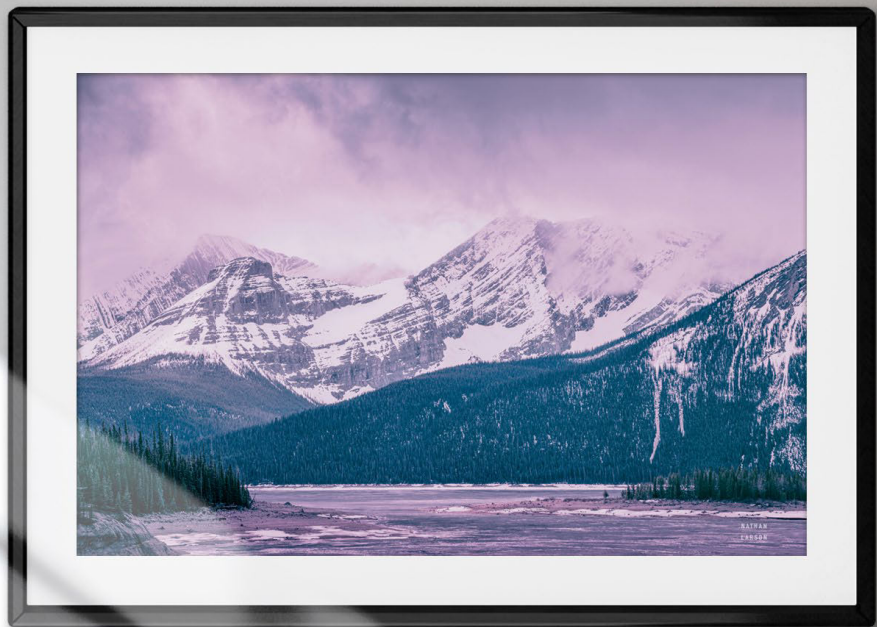


#BUYART



A: 79407 NEW MEXICO MOUNTAINS
B: 79409 LONG WAY TO RIDE BW
C: 81196 FROM BELOW
D: 77217 MONTANA MOVES
E: 79406 SPRING MOON TONES
NATHAN LARSON





81199 MOOD STORMS
NATHAN LARSON



explore more art

LAURA MARSHALL



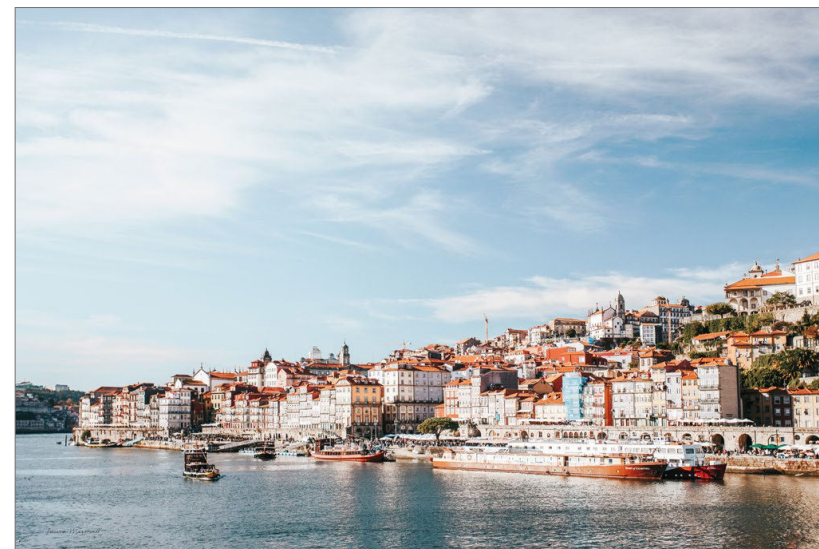
81309 PORTO II

#BUYART

LAURA MARSHALL



81308 PORTO I



81310 PORTO III



ART DECOR

LAURA MARSHALL



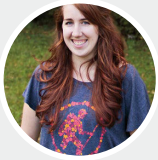
81306 SANTA MONICA PIER

LAURA MARSHALL



81307 PORTO HOUSES

81305 SANTA MONICA BEACH IV
LAURA MARSHALL



**laura
marshall**

Between her rural Michigan roots and a childhood filled with cross-country camping trips, Laura is at home in nature. Though her primary medium is photography, Laura has also discovered a love for watercolors and gouache, giving her another way to express the beauty she sees in the world around her. Currently living and working in Vermont, Laura continues to paint, take pictures, and enjoy long walks in the woods with her husband and dog.

SEE MORE ART



PAMELA MUNGER



81181 MONTEREY

SILVIA VASSILEVA



80861 SUNSHINE COAST

SILVIA VASSILEVA

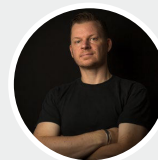


80856 PACIFIC LIGHT





79432 SPARKLING WATERS III
NATHAN LARSON



**nathan
larson**

Nathan Larson is a Vermont-based photographer and chocolate consumer. For over 20 years he has created work that ranges from fine art photography to landscapes, abstracts, wildlife, and mixed media. He enjoys collaborating with clients to produce the perfect images for their projects and believes the world is a better place with more art in it. "I still use my first camera, though I have added some tools along the way, and I'm still seeking new ways to share visual stories with my audience."

SEE MORE ART

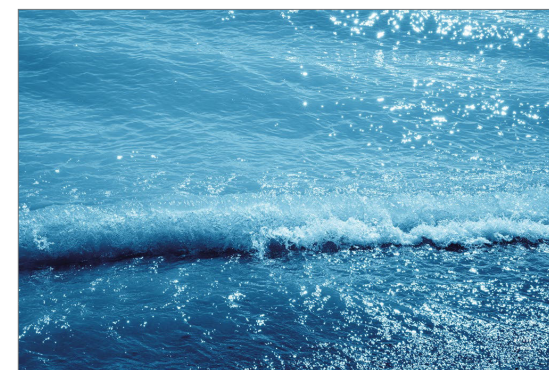
NATHAN LARSON



79431 SPARKLING WATERS II



79430 SPARKLING WATERS I



79433 SPARKLING WATERS IV



JEANETTE VERTENTES



80798 IN THE COVE

JEANETTE VERTENTES



80799 QUAHOG SHELL

JEANETTE VERTENTES



80797 HEARTBEAT

DANHUI NAI



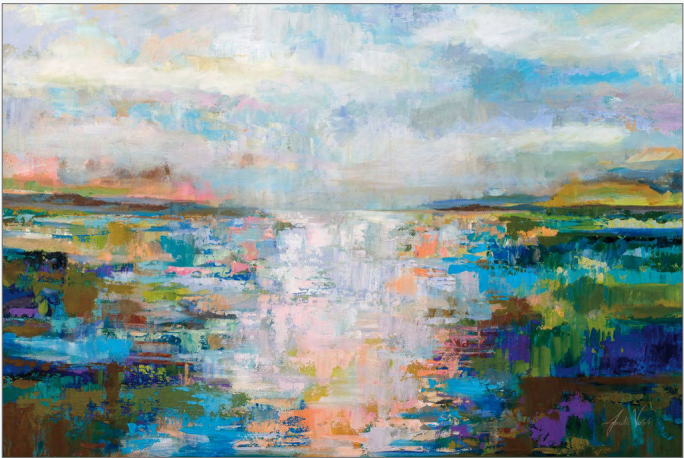
81243 EGRET BY THE SEA



81242 PELICAN BY THE SEA

ART DECOR

JEANETTE VERTENTES



80793 CALM DAWN

JAMES WIENS



57271 LAKESIDE MORNING



80783 SPRING WALK
PAMELA MUNGER

LAURA MARSHALL



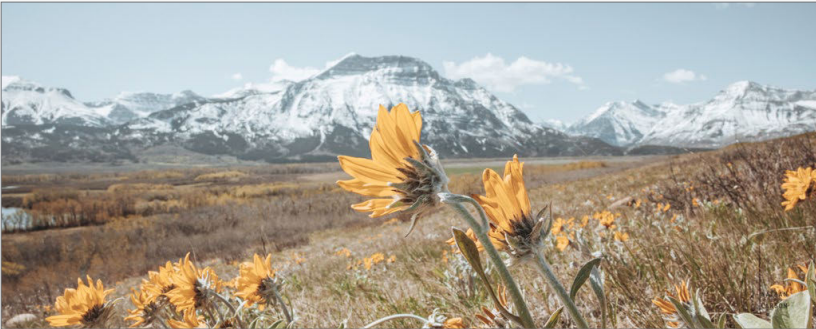
81312 HIGHLAND MOUNTAINS

LAURA MARSHALL



81311 KILCHURN CASTLE

NATHAN LARSON



81200 MOUNTAIN BLOOMS

SILVIA VASSILEVA



80515 BLOOMING PEONY I



80516 BLOOMING PEONY II

DANHUI NAI



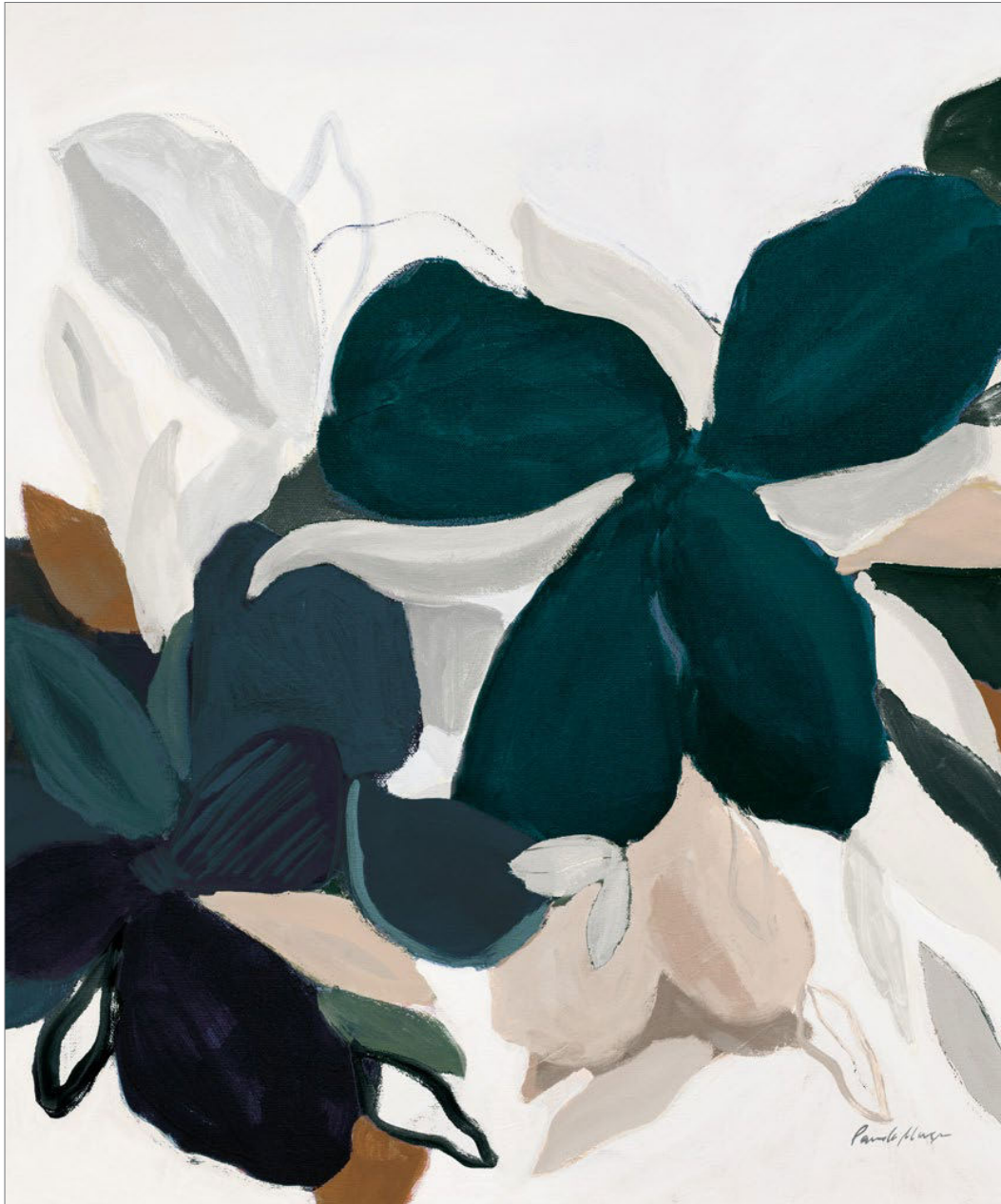
81245 EXOTIC BOUQUET

DANHUI NAI



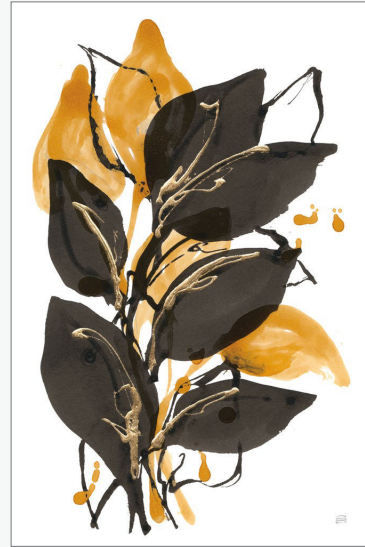
81097 BRADERIE ROSES

PAMELA MUNGER



74407 BOTANICAL FLOW NEUTRAL

#BUYART



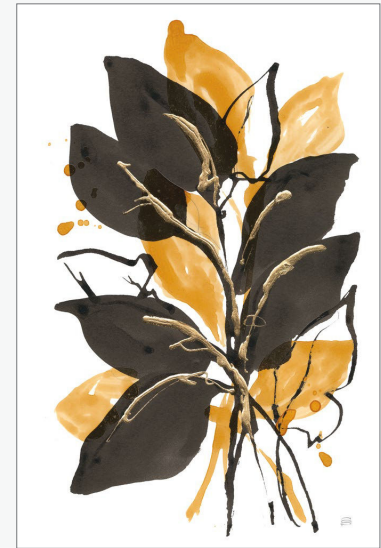
76322 AMBER BLACK AND GOLD I
CHRIS PASCHKE



81202 VINTAGE PINEAPPLE II
WILD APPLE PORTFOLIO



81201 VINTAGE PINEAPPLE I
WILD APPLE PORTFOLIO



76323 AMBER BLACK AND GOLD II
CHRIS PASCHKEE



CHRIS PASCHKE



80811 NARCISSUS I



80812 NARCISSUS II

DANHUI NAI



78201 AUTUMN KITCHEN

KATRINA PETE



81172 FARMHOUSE STILL LIFE



**katrina
pete**

Katrina Pete's artwork is a collection of inspired mementoes from her garden, woodland walks, and outdoor adventures with her family. Painting since childhood, she loves incorporating natural elements and light into her watercolor paintings. Her beautiful collections are created with a loose technique that allows the paint to do what it does best, flow and bloom and fade into other colors on the page.

SEE MORE ART

WILD APPLE PORTFOLIO



77684 VICTORIAN GARDEN V LIGHT



77685 VICTORIAN GARDEN VI LIGHT



81133 LEAF AND STEM V
LAURA HORN



81134 LEAF AND STEM VI
LAURA HORN



81135 LEAF AND STEM VII
LAURA HORN



81136 LEAF AND STEM VIII
LAURA HORN



A

B

A: 79729 CYPRUS IV
 B: 79730 CYPRUS V
 JANELLE PENNER



**janelle
 penner**

Janelle had found her inspiration from the natural beauty of the Pacific Northwest at an early age. Later in life, her inspiration came from every art form; from the early masters, to modern day graphics and advertising. Janelle is primarily self-taught, and has experimented with various mediums, though she usually works with combining traditional and digital arts. She currently lives and creates art in Germany.

SEE MORE ART

#BUYART

CHERYL WARRICK



80151 PETAL PLAY IV



80153 PETAL PLAY VI



DANHUI NAI



81341 COUNTRY BOUQUET I



78549 PICKET FENCE FLOWERS II

DANHUI NAI



81244 PLENTIFUL



78548 PICKET FENCE FLOWERS I



81342 COUNTRY BOUQUET II

NATHAN LARSON



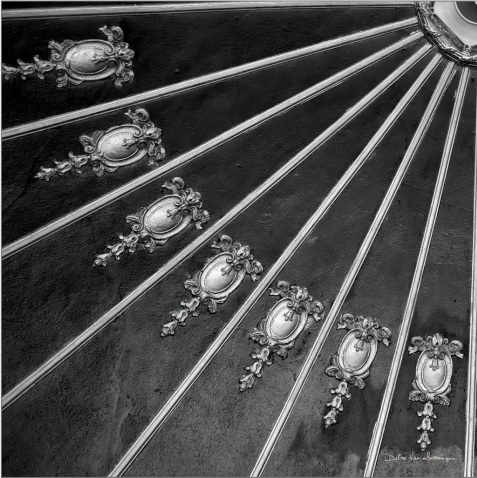
81198 HOLLYHOCK EDGE

ART DECOR

DEBRA VAN SWEARINGEN



81253 ARCHITECTURAL DESIGN I



81255 ARCHITECTURAL DESIGN III

A: 81254 ARCHITECTURAL DESIGN II
B: 81256 ARCHITECTURAL DESIGN IV
DEBRA VAN SWEARINGEN



debra van swearingen

Debra Van Swearingen has had a passion for photography since the age of 12. She supported her hobby by working in government contracts, while taking classes at the Oklahoma School of Photography. It was in 1995, after a year of cancer remediation, that Debra decided to make her passion and her profession one and the same. Her studio is in the artistically vibrant Paseo District of Oklahoma City.

SEE MORE ART



WILD APPLE

800 756 8359 (TOLL FREE IN THE US)
802 457 3003 (INTERNATIONAL)
SALES@WILDAPPLE.COM | WWW.WILDAPPLE.COM

ONE LINCOLN CORNERS, SUITE 102
43 LINCOLN CORNERS WAY
WOODSTOCK, VT 05091



PROUD MEMBER OF

ART  COPYRIGHT  COALITION
PROTECTING ART *and* CREATIVITY